

Veronique Mead, MD, MA *Somatic Psychotherapy
Trauma therapy
Research*

*No cure
Environment affects risk
Paradoxical findings*

Image
of
a model

Grounded Theory

*Understand origins
Integrate brain research
Work from a new paradigm*

Abstract

Background

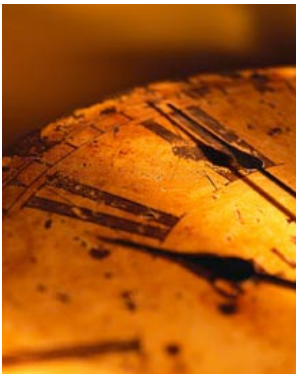
There are no cures for chronic disease and existing treatment is often ineffective or associated with significant side-effects. Non-genetic risk factors significantly affect risk for disease, however, and present an opportunity for the development of successful prevention and treatment strategies. Despite hypotheses that events in early life initiate chronic disease and that stressful events often precede diagnosis or exacerbate symptoms, the role of environmental factors is poorly understood and findings are frequently conflicting.

Methods

Through the process of *Grounded Theory*, a comprehensive model for understanding the role of environmental events in risk for disease is being developed and refined through an iterative process¹⁻³. Research from the "Decade of the Brain" provides powerful new insights for understanding the role of life events in the origins and expression of chronic illness. Insights drawn from research in traumatic stress (reviewed in⁴⁻⁷) and experience-dependent maturation (reviewed in⁸⁻¹¹) suggest that 1) traumatic events in early life initiate disease during critical periods of organ development, 2) exposure to stressful events related to these original traumatic events perpetuate and may precipitate disease, and 3) stressful events that trigger symptom exacerbations relate to previous traumatic experiences unique to each individual. This information is utilized to examine findings from clinical, physiological and epidemiological research in chronic disease.

Objectives

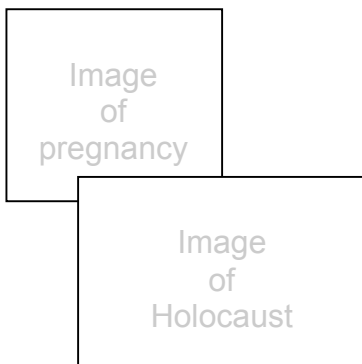
- ❖ Clarify the role of environmental events in the initiation, perpetuation, precipitation, and expression of chronic disease and disease complications.
- ❖ Integrate perspectives from existing studies in brain research with clinical, physiological, and epidemiological studies in chronic disease.
- ❖ Identify and evaluate effective treatment and prevention strategies.



H1: Timing determines disease specificity



H2: Intensity affects risk
H3: Stressors are idiosyncratic



Findings

A comprehensive model has been developed that appears capable of explaining and predicting the impact of environmental events in association with risk for disease. Similar trajectories leading to the development of chronic illness have been elucidated for physical disease as well as mental illness.

Hypothesis 1: Timing of traumatic stress during critical periods of organ system development initiates risk and determines specificity of structural or functional abnormalities^{8 12-22} leading to disease.

Findings: Stressful events in early life, including emotional stress and obstetrical complications during pregnancy, labor, and delivery, are associated with increased risk for asthma²³⁻³³, autism³⁴, eating disorders³⁵, inflammatory bowel disease³⁶, multiple sclerosis³⁷, schizophrenia³⁸, and type 1 diabetes³⁹⁻⁴⁴. Low birth weight, which can be caused by prenatal stress, is associated with increased risk for the metabolic syndrome (increases in blood pressure, cholesterol, glucose, obesity, type 2 diabetes, heart disease, and stroke)⁴⁵⁻⁴⁸ as well as asthma^{23 24 33 49-53}, autism⁵⁴, celiac disease⁵⁵, inflammatory bowel disease³⁶, osteoporosis²², and osteoporotic fractures⁵⁶.

Hypothesis 2: Intensity of stressful events⁴⁻⁷ influences rates of disease progression and age of onset.

Findings: Stressful events are more frequent or more severe, or both, in inflammatory bowel disease⁵⁷⁻⁵⁹, multiple sclerosis^{60 61}, schizophrenia³⁸, and type 1 diabetes^{62 63 64}.

Hypothesis 3: Idiosyncratic stressors affect symptom variability because they relate to contextual cues associated with previous traumatic events, which are experiences that are unique to each individual⁴⁻⁷.

Findings: Individual responses to stress, including variation in symptom expression and exacerbation, are highly variable and are unique to the individual rather than to the stressful event. Responses to stress in type 1 diabetes^{65 66} are idiosyncratic and similar findings have been noted in asthma^{67 68 69}, multiple sclerosis⁶¹, and inflammatory bowel disease⁵⁷⁻⁵⁹.

Implications

The impact of life events on brain plasticity has been grossly underestimated. Cultural, societal, and global traumatic events, such as the Holocaust on the one hand, and the rapidly expanding implementation of technologically assisted births (cesarean section^{70 71}, labor induction, routine parent-infant separation in the first hours postpartum⁷²) with Westernization on the other, appear capable of affecting risk for disease in the individual and across multiple generations. Such events are having large and essentially unrecognized effects on society and health^{3 73}.

Brain plasticity appears capable of facilitating recovery, and body-oriented trauma therapies appear to be uniquely effective in treating illnesses such as PTSD⁴⁻⁷. Treatment of trauma-related bonding disruptions in mothers has been found to reverse asthma in the child on the same day that recovery is achieved in the parent⁷⁴⁻⁷⁸.

Veronique Mead, MD, MA

**Environmental
Origins of Disease**

Boulder, CO

PHONE:
(303) 527-0551

FAX:
(253) 679-5229

E-MAIL:
vmead@mindspring.com

**Somatic Psychotherapy
Trauma Therapy
&
Research**

For more information visit:

www.veroniquemead.com

References

1. Mead VP. Somatic psychology theory and the origins of chronic illness: a case study of type 1 diabetes [Master's Thesis]. Naropa University, 2003.
2. Mead VP. A new model for understanding the role of environmental factors in the origins of chronic illness: a case study of type 1 diabetes mellitus. *Med Hypotheses* 2004;63(6):1035-46.
3. Mead VP. A Proposed Relationship between Bonding and Attachment, Neurological Development, and Disease. In: Columbus F, editor. *Parent-Child Relations*: Nova, 2006 in process.
4. Scaer R. *The trauma spectrum: Hidden wounds and human resiliency*. New York: W.W. Norton, 2005.
5. Scaer RC. *The body bears the burden: trauma, dissociation, and disease*. New York: Haworth Medical, 2001.
6. van der Kolk B. The body keeps the score: approaches to the psychobiology of Posttraumatic Stress Disorder. In: van der Kolk BA, McFarlane AC, Weisaeth L, editors. *Traumatic stress: the effects of overwhelming experience on mind, body, and society*. New York: Guilford, 1996:214-241.
7. Levine P. *Waking the tiger*. Berkeley: North Atlantic Books, 1997.
8. Rice D, Barone S, Jr. Critical periods of vulnerability for the developing nervous system: evidence from humans and animal models. *Environ Health Perspect* 2000;108 Suppl 3:511-33.
9. Schore AN. *Affect regulation and the origin of the self: the neurobiology of emotional development*. Hillsdale, NJ: Lawrence Erlbaum, 1994.
10. Siegel D. *The developing mind*. New York: NY: Guilford, 1999.
11. National Research Council and Institute of Medicine. *From neurons to neighborhoods: the science of early childhood development. Committee on integrating the science of early childhood development*. Board on children, youth, and families, Commission on behavioral and social sciences and education. Washington, D.C.: National Academy Press, 2000.
12. Adams J, Barone S, Jr., LaMantia A, Philen R, Rice DC, Spear L, et al. Workshop to identify critical windows of exposure for children's health: neurobehavioral work group summary. *Environ Health Perspect* 2000;108 Suppl 3:535-44.
13. Sadler TW. Susceptible periods during embryogenesis of the heart and endocrine glands. *Environ Health Perspect* 2000;108 Suppl 3:555-61.
14. Pinkerton KE, Joad JP. The mammalian respiratory system and critical windows of exposure for children's health. *Environ Health Perspect* 2000;108 Suppl 3:457-62.
15. Diert RR, Etzel RA, Chen D, Halonen M, Holladay SD, Jarabek AM, et al. Workshop to identify critical windows of exposure for children's health: immune and respiratory systems work group summary. *Environ Health Perspect* 2000;108 Suppl 3:483-90.
16. Holladay SD, Smialowicz RJ. Development of the murine and human immune system: differential effects of immunotoxicants depend on time of exposure. *Environ Health Perspect* 2000;108 Suppl 3:463-73.
17. Barr M, Jr., DeSesso JM, Lau CS, Osmond C, Ozanne SE, Sadler TW, et al. Workshop to identify critical windows of exposure for children's health: cardiovascular and endocrine work group summary. *Environ Health Perspect* 2000;108 Suppl 3:569-71.
18. Selevan SG, Kimmel CA, Mendola P. Identifying critical windows of exposure for children's health. *Environ Health Perspect* 2000;108 Suppl 3:451-5.
19. Hoet JJ, Ozanne S, Reusens B. Influences of pre- and postnatal nutritional exposures on vascular/endocrine systems in animals. *Environ Health Perspect* 2000;108 Suppl 3:563-8.

20. Peden DB. Development of atopy and asthma: candidate environmental influences and important periods of exposure. *Environ Health Perspect* 2000;108 Suppl 3:475-82.
21. Sanchez MM, Ladd CO, Plotsky PM. Early adverse experience as a developmental risk factor for later psychopathology: evidence from rodent and primate models. *Dev Psychopathol* 2001;13(3):419-49.
22. Cooper C, Walker-Bone K, Arden N, Dennison E. Novel insights into the pathogenesis of osteoporosis: the role of intrauterine programming. *Rheumatology (Oxford)* 2000;39(12):1312-5.
23. Oliveti JF, Kercksmar CM, Redline S. Pre- and perinatal risk factors for asthma in inner city African- American children. *Am J Epidemiol* 1996;143(6):570-7.
24. Xu B, Pekkanen J, Jarvelin MR. Obstetric complications and asthma in childhood. *J Asthma* 2000;37(7):589-94.
25. Nafstad P, Samuelsen SO, Irgens LM, Bjerkedal T. Pregnancy complications and the risk of asthma among Norwegians born between 1967 and 1993. *Eur J Epidemiol* 2003;18(8):755-61.
26. Xu B, Pekkanen J, Hartikainen AL, Jarvelin MR. Caesarean section and risk of asthma and allergy in adulthood. *J Allergy Clin Immunol* 2001;107(4):732-3.
27. Kero J, Gissler M, Gronlund MM, Kero P, Koskinen P, Hemminki E, et al. Mode of delivery and asthma -- is there a connection? *Pediatr Res* 2002;52(1):6-11.
28. Annesi-Maesano I, Moreau D, Strachan D. In utero and perinatal complications preceding asthma. *Allergy* 2001;56(6):491-7.
29. Li YF, Langholz B, Salam MT, Gilliland FD. Maternal and grandmaternal smoking patterns are associated with early childhood asthma. *Chest* 2005;127(4):1232-41.
30. Sherriff A, Peters TJ, Henderson J, Strachan D. Risk factor associations with wheezing patterns in children followed longitudinally from birth to 3(1/2) years. *Int J Epidemiol* 2001;30(6):1473-84.
31. Bager P, Melbye M, Rostgaard K, Benn CS, Westergaard T. Mode of delivery and risk of allergic rhinitis and asthma. *J Allergy Clin Immunol* 2003;111(1):51-6.
32. Oddy WH, Holt PG, Sly PD, Read AW, Landau LI, Stanley FJ, et al. Association between breast feeding and asthma in 6 year old children: findings of a prospective birth cohort study. *Bmj* 1999;319(7213):815-9.
33. Dell S, To T. Breastfeeding and asthma in young children: findings from a population-based study. *Arch Pediatr Adolesc Med* 2001;155(11):1261-5.
34. Glasson EJ, Bower C, Petterson B, de Klerk N, Chaney G, Hallmayer JF. Perinatal factors and the development of autism: a population study. *Arch Gen Psychiatry* 2004;61(6):618-27.
35. Favaro A, Tenconi E, Santonastaso P. Perinatal factors and the risk of developing anorexia nervosa and bulimia nervosa. *Arch Gen Psychiatry* 2006;63(1):82-8.
36. Ekbohm A, Adami HO, Helmick CG, Jonzon A, Zack MM. Perinatal risk factors for inflammatory bowel disease: a case-control study. *Am J Epidemiol* 1990;132(6):1111-9.
37. Maser C. [The perinatal period of multiple sclerosis patients]. *Schweiz Med Wochenschr* 1969;99(50):1824-6.
38. Corcoran C, Walker E, Huot R, Mittal V, Tessner K, Kestler L, et al. The stress cascade and schizophrenia: etiology and onset. *Schizophr Bull* 2003;29(4):671-92.
39. McKinney PA, Parslow R, Gurney K, Law G, Bodansky HJ, Williams DRR. Antenatal risk factors for childhood diabetes mellitus: a case control study of medical record data in Yorkshire, UK. *Diabetologia* 1997;40:933-939.

40. Bache I, Bock T, Volund A, Buschard K. Previous maternal abortion, longer gestation, and younger maternal age decrease the risk of type 1 diabetes among male offspring. *Diabetes Care* 1999;22(7):1063-5.
41. Stene LC, Barriga K, Norris JM, Hoffman M, Erlich HA, Eisenbarth GS, et al. Perinatal factors and development of islet autoimmunity in early childhood: the diabetes autoimmunity study in the young. *Am J Epidemiol* 2004;160(1):3-10.
42. Dahlquist G, Kallen B. Maternal-child blood group incompatibility and other perinatal events increase the risk for early-onset type 1 (insulin-dependent) diabetes mellitus. *Diabetologia* 1992;35(7):671-675.
43. Patterson CC, Carson DJ, Hadden DR, Waugh NR, Cole SK. A case-control investigation of perinatal risk factors for childhood IDDM in northern Ireland and Scotland. *Diabetes Care* 1994;17(5):376-381.
44. Dahlquist GG, Patterson C, Soltesz G. Perinatal risk factors for childhood type 1 diabetes in Europe. The EURODIAB Substudy 2 Study Group. *Diabetes Care* 1999;22(10):1698-1702.
45. Nathanielsz P. *Life in the womb*. Ithaca, NY: Promethean, 1999.
46. Seckl JR. Prenatal glucocorticoids and long-term programming. *Eur J Endocrinol* 2004;151 Suppl 3:U49-62.
47. Clark PM. Programming of the hypothalamo-pituitary-adrenal axis and the fetal origins of adult disease hypothesis. *Eur J Pediatr* 1998;157 (Suppl 1):S7-10.
48. Gluckman P, Hanson M. *The fetal matrix: Evolution, development and disease*. Cambridge: Cambridge University Press, 2005.
49. Lewis S, Richards D, Bynner J, Butler N, Britton J. Prospective study of risk factors for early and persistent wheezing in childhood. *Eur Respir J* 1995;8(3):349-56.
50. Rusconi F, Galassi C, Corbo GM, Forastiere F, Biggeri A, Ciccone G, et al. Risk factors for early, persistent, and late-onset wheezing in young children. SIDRIA Collaborative Group. *Am J Respir Crit Care Med* 1999;160(5 Pt 1):1617-22.
51. Chulada PC, Arbes Jr SJ, Dunson D, Zeldin DC. Breast-feeding and the prevalence of asthma and wheeze in children: analyses from the Third National Health and Nutrition Examination Survey, 1988-1994. *J Allergy Clin Immunol* 2003;111(2):328-36.
52. Svanes C, Omenaas E, Heuch JM, Irgens LM, Gulsvik A. Birth characteristics and asthma symptoms in young adults: results from a population-based cohort study in Norway. *Eur Respir J* 1998;12(6):1366-70.
53. Edwards CA, Osman LM, Godden DJ, Campbell DM, Douglas JG. Relationship between birth weight and adult lung function: controlling for maternal factors. *Thorax* 2003;58(12):1061-5.
54. Hultman CM, Sparen P, Cnattingius S. Perinatal risk factors for infantile autism. *Epidemiology* 2002;13(4):417-23.
55. Sandberg-Bennich S, Dahlquist G, Kallen B. Coeliac disease is associated with intrauterine growth and neonatal infections. *Acta Paediatr* 2002;91(1):30-3.
56. Cooper C, Javaid MK, Taylor P, Walker-Bone K, Dennison E, Arden N. The fetal origins of osteoporotic fracture. *Calcif Tissue Int* 2002;70(5):391-4.
57. Levenstein S. Psychosocial factors in peptic ulcer and inflammatory bowel disease. *J Consult Clin Psychol* 2002;70(3):739-50.
58. Levenstein S. Stress and ulcerative colitis: convincing the doubting Thomases. *Am J Gastroenterol* 2003;98(10):2112-5.
59. Maunder RG. Evidence that stress contributes to inflammatory bowel disease: evaluation, synthesis, and future directions. *Inflamm Bowel Dis* 2005;11(6):600-8.
60. Sibley WA, Bamford CR, Clark K, Smith MS, Laguna JF. A prospective study of physical trauma and multiple sclerosis. *J Neurol Neurosurg Psychiatry* 1991;54(7):584-9.

61. Ackerman KD, Heyman R, Rabin BS, Anderson BP, Houck PR, Frank E, et al. Stressful life events precede exacerbations of multiple sclerosis. *Psychosom Med* 2002;64:916-920.
62. Kisch ES. Stressful events and the onset of diabetes mellitus. *Isr J Med Sci* 1985;21(4):356-8.
63. Robinson N, Lloyd CE, Fuller JH, Yatemana NA. Psychosocial factors and the onset of Type 1 diabetes. *Diabet Med* 1989;6:53-58.
64. Robinson N, Fuller JH. Role of life events and difficulties in the onset of diabetes mellitus. *J Psychosom Res* 1985;29:583-591.
65. Gonder-Frederick LA, Carter WR, Cox DJ, Clarke WL. Environmental stress and blood glucose change in insulin-dependent diabetes mellitus. *Health Psychol* 1990;9(5):503-515.
66. Stabler B, Morris MA, Litton J, Feinglos MN, Surwit RS. Differential glycemic response to stress in type A and type B individuals with IDDM [letter]. *Diabetes Care* 1986;9(5):550-552.
67. Ritz T, Steptoe A, DeWilde S, Costa M. Emotions and stress increase respiratory resistance in asthma. *Psychosom Med* 2000;62(3):401-12.
68. Wright RJ, Steinbach SF. Violence: an unrecognized environmental exposure that may contribute to greater asthma morbidity in high risk inner-city populations. *Environ Health Perspect* 2001;109(10):1085-9.
69. Madrid A. Helping Children with Asthma by Repairing Maternal-infant Bonding Problems. *American Journal of Clinical Hypnosis* 2006;48(2-3):192-204.
70. DiMatteo MR, Morton SC, Lepper HS, Damush TM, Carney MF, Pearson M, et al. Cesarean childbirth and psychosocial outcomes: a meta-analysis. *Health Psychol* 1996;15(4):303-314.
71. Menacker F. Trends in cesarean rates for first births and repeat cesarean rates for low-risk women: United States, 1990-2003. *National Vital Statistics Reports*. Hyattsville, MD: National Center for Health Statistics, 2005.
72. Klaus MH, Kennell JH. *Maternal-infant bonding*. St. Louis: Mosby, 1976.
73. Pearce JC. *Evolution's end: claiming the potential of our intelligence*. New York: HarperCollins, 1992.
74. Madrid A, Ames R, Skolek S, Brown G. Does maternal-infant bonding therapy improve breathing in asthmatic children? *Journal of Prenatal and Perinatal Psychology and Health* 2000;15(2):90-117.
75. Madrid AH, Ames R, Horner D, Brown G, Navarrette L. Improving Asthma Symptoms in Children by Repairing the Maternal-Infant Bond. *Journal of Prenatal and Perinatal Psychology and Health* 2004;18:221-231.
76. Madrid A. Maternal-infant bonding and pediatric asthma: an initial investigation. *Journal of Prenatal and Perinatal Psychology and Health* 1991;5(4):346-358.
77. Madrid A, Pennington D. Maternal-infant bonding and asthma. *Journal of Prenatal and Perinatal Psychology and Health* 2000;14(3-4):279-289.
78. Madrid A. Helping Children with Asthma by Repairing Maternal-infant Bonding Problems. *American Journal of Clinical Hypnosis* 2006;48(2-3):192-204.